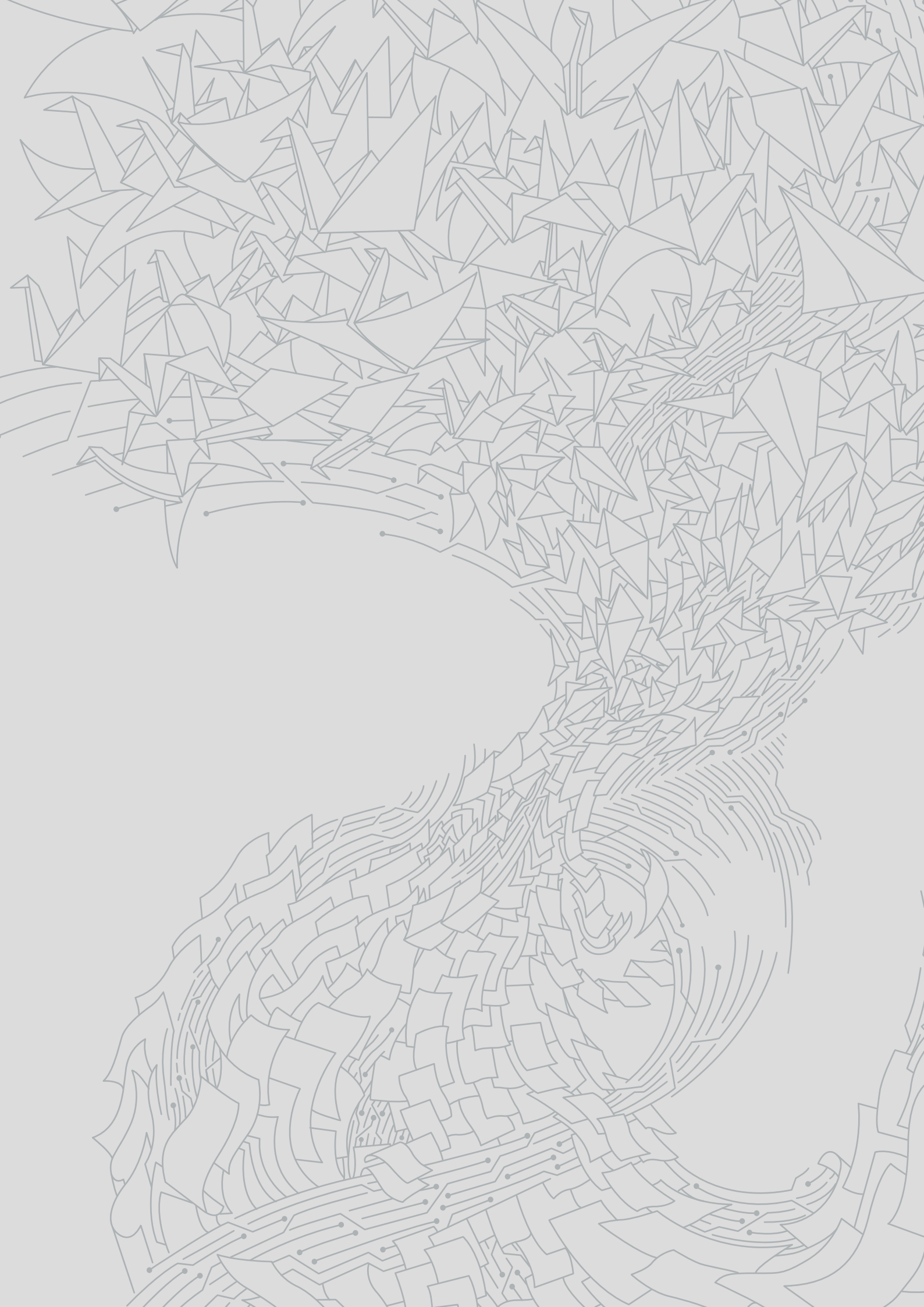


# ANNUAL CSR REPORT



---

2020 - 2021



# CONTENTS

<b>WELCOME FROM JOHN JOYCE</b>	<b>4</b>
<b>OUR COMMITMENT</b>	<b>7</b>
<b>OUR APPROACH</b>	<b>7</b>
<b>NEW WAYS OF WORKING</b>	<b>8</b>
<b>CHARITY: OUR CHARITY COMMITTEES</b>	<b>9</b>
<b>THE AG CHARITABLE TRUST</b>	<b>13</b>
<b>KUSASA</b>	<b>16</b>
<b>COMMUNITY: A YEAR OF GIVING BACK</b>	<b>18</b>
<b>PRO BONO</b>	<b>27</b>
<b>LOOKING AHEAD</b>	<b>32</b>





## WELCOME FROM JOHN JOYCE

Welcome to our Annual CSR Report, covering the period 2020-2021. In the last 12 months we have seen unprecedented challenges in our communities with food poverty, homelessness, mental health challenges and lack of access to education becoming just some of the new normal for many. It has been a year where charities and support organisations have seen a significant increase in demand for their services but also a year where their resources have been at an all-time low due to social distancing measures across the globe and fundraising activities greatly reduced.

At Addleshaw Goddard, we have always tried hard to contribute positively to our communities, in fact it is a key part of how we think and how we do business. This year, however, we had to adapt our CSR programme to find new ways in which we could provide more support to those in our communities that are most in need.

The engagement we have seen from the firm demonstrates not only the level of commitment that everyone in the firm has in supporting our CSR programme; but it also demonstrates how we continually look to refresh and find new innovative ways to develop our CSR programme so that together, we can have even more positive impact on our communities.

I want to thank everyone who has participated in our CSR programme over the last 12 months and I very much look forward to developing our programme further.

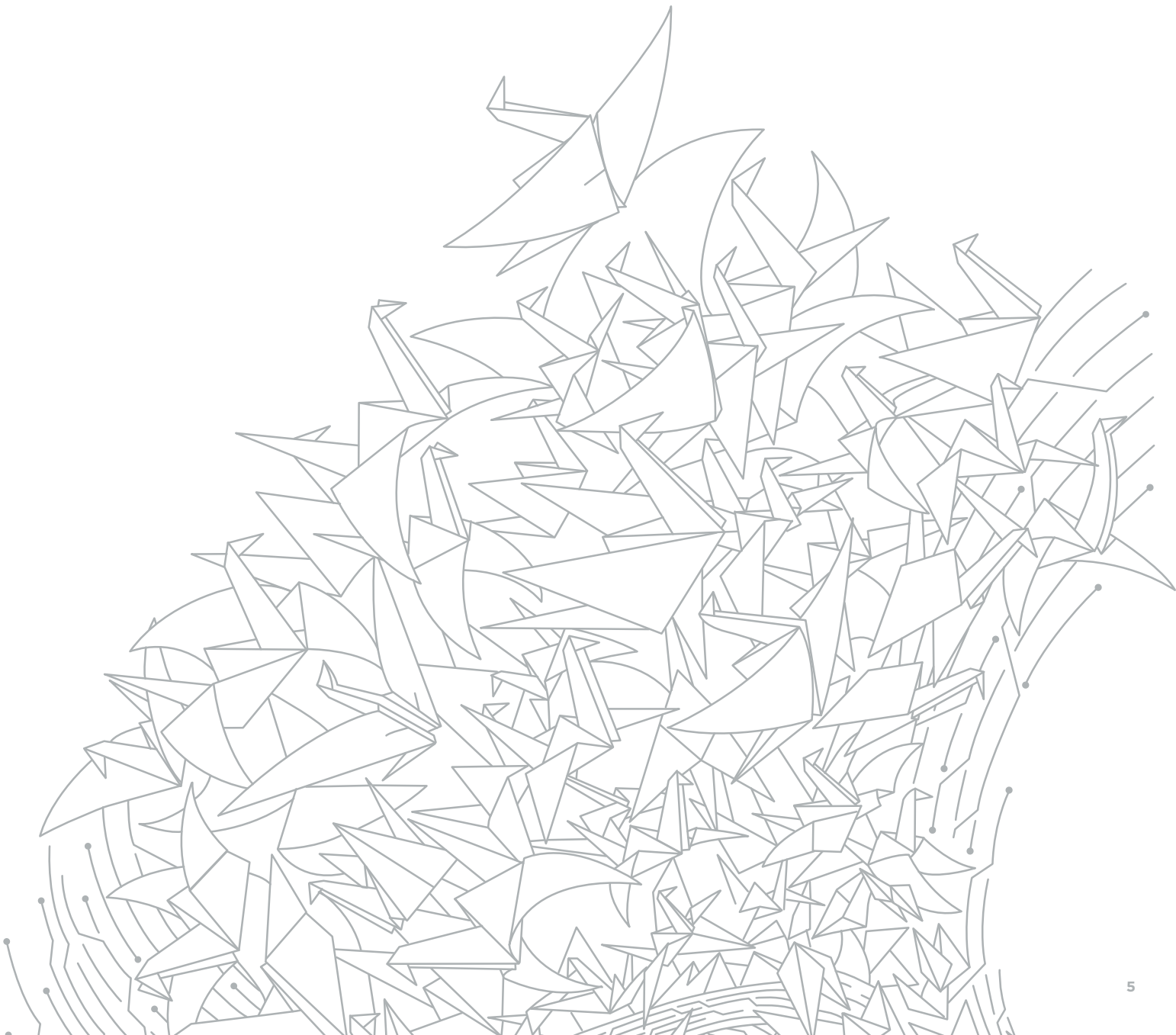
**John Joyce**  
Managing Partner



“

**WE ARE VERY PROUD OF THE LEVELS OF INTERNAL ENGAGEMENT WITH OUR CSR PROGRAMME AND THIS HAS BEEN RECOGNISED BY OUR PEOPLE, OUR CLIENTS AND OUR PARTNERS IN THE THIRD SECTOR. WE ARE PASSIONATE ABOUT SHAPING OUR POSITIVE REPUTATION IN OUR LOCAL MARKETS AND THE DIFFERENCE WE ARE MAKING IN OUR COMMUNITIES IS HELPING TO ACHIEVE THAT.**

Catherine Fearnhead, Manchester CSR Partner

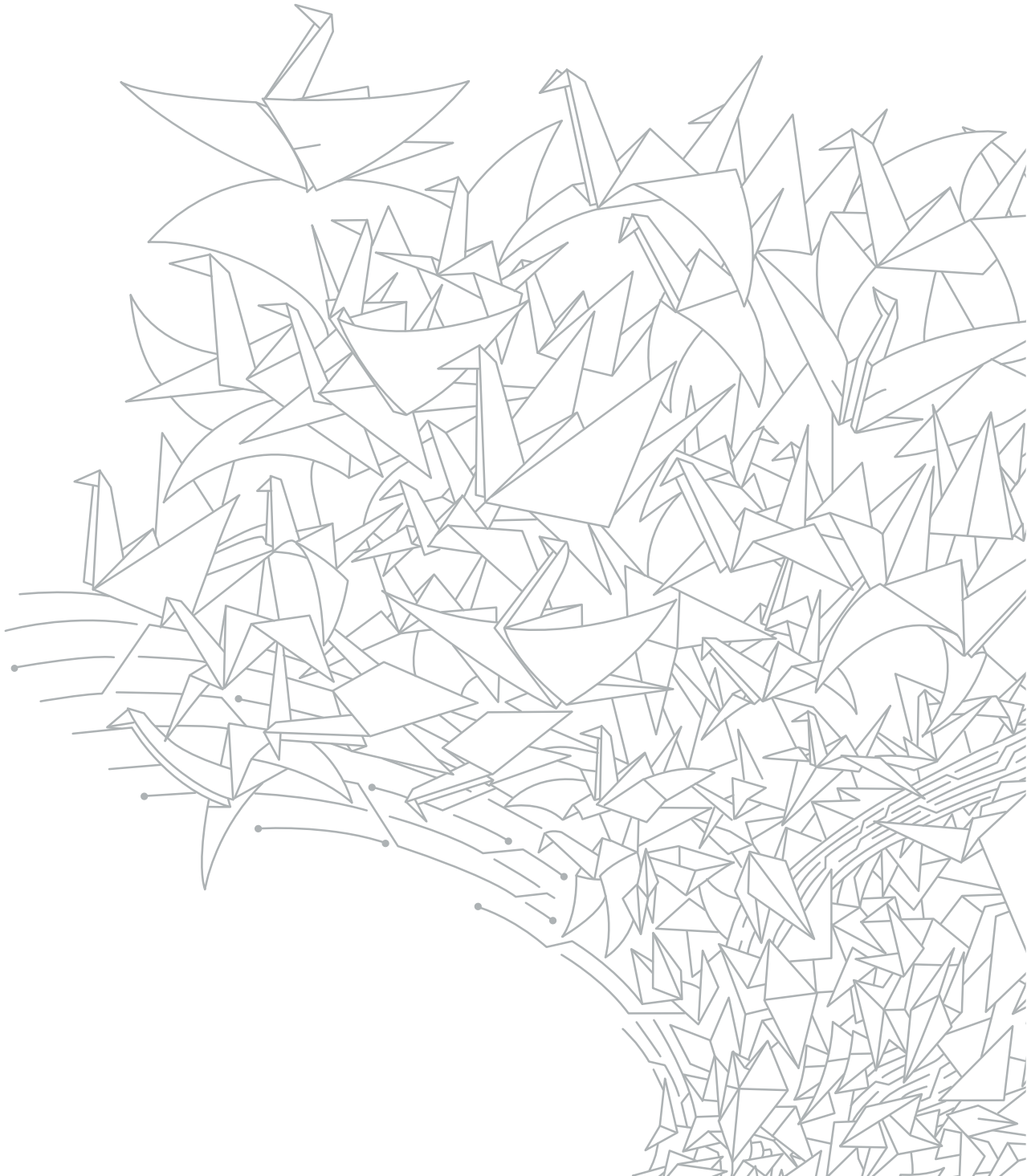




“

**OUR CSR COMMITTEES ACROSS THE FIRM PLAY AN INTEGRAL ROLE IN IMPLEMENTING OUR WIDER CSR COMMITMENTS. I AM PERSONALLY VERY PROUD OF THE ENTHUSIASM WE SEE FROM OUR PEOPLE DEMONSTRATING A REAL COMMITMENT TO OUR VALUES AND ALLOWING THEM TO DEVELOP THEIR SKILLS, WHILST CONTRIBUTING TO WIDER COMMUNITY INVESTMENT.**

Heather Pearson, Scotland CSR Partner



# OUR COMMITMENT

---

Our CSR strategy is framed around our ultimate objective of **Unlocking Young Potential**. We aim to make an active contribution to our communities by supporting young people to reach their full potential through our three CSR pillars: Access to Education, Access to the Profession and Access to Work.

We implement our CSR strategy through our community work and charity work, which is also supplemented by our pro bono programme. All of this is underpinned by a wider commitment and investment from the firm through the AG Charitable Trust and our environmental policies and initiatives.

We aspire to be a positive force for good in the community and therefore encourage active participation from our people in our CSR initiatives, schemes and programmes. We are also committed to directing central time, budget and resource into ensuring the success of our CSR programmes and driving our social purpose.

# OUR APPROACH

---

We take steps to ensure we have an appropriate CSR governance structure, which is supported and endorsed by the partners. This structure comprises of CSR Partners at each office, who sponsor the CSR activities of the firm along with two Pro Bono Partners, local committee structures to oversee local implementation and central supervision from the central CSR and Inclusion Team.

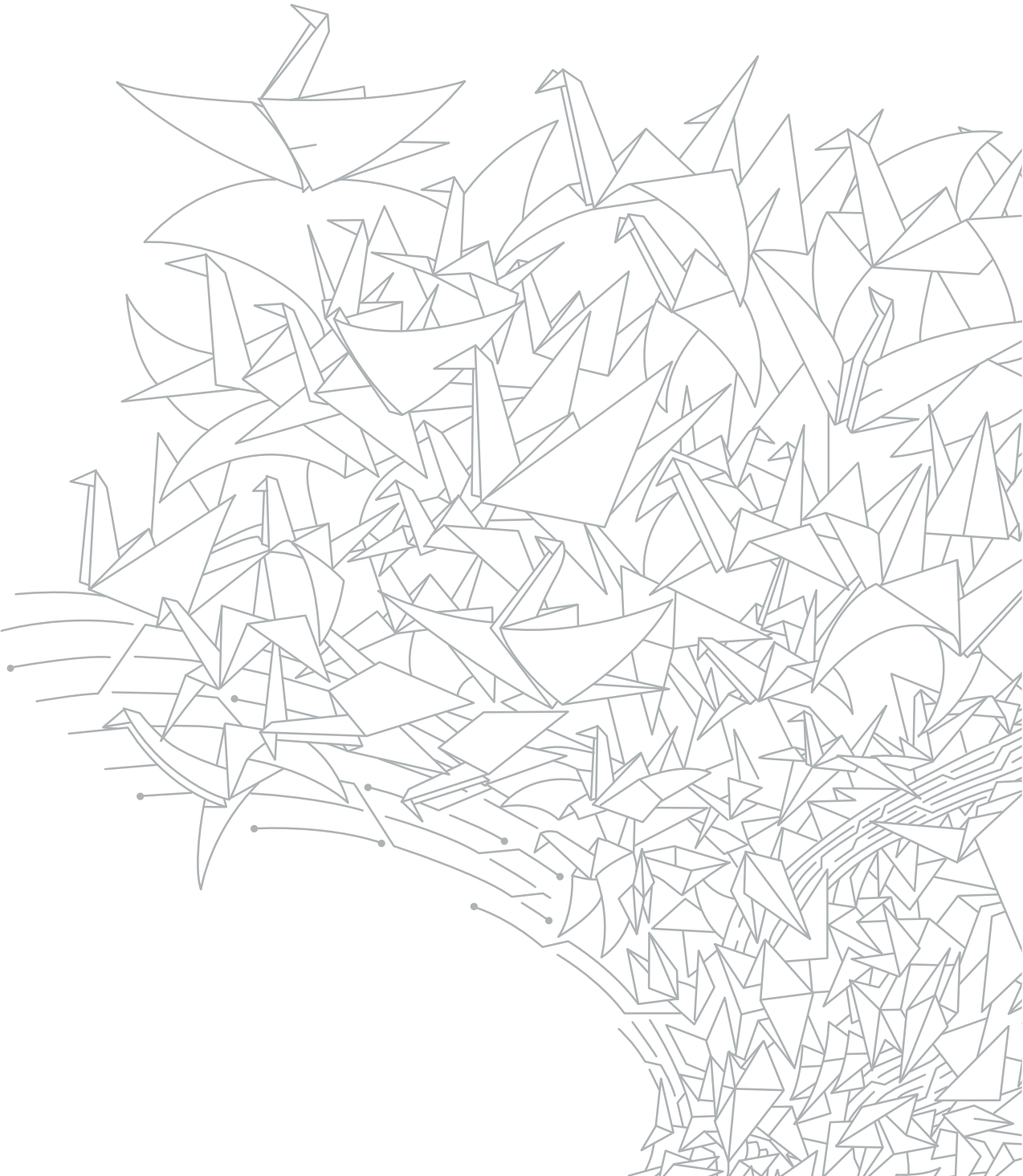
- We are committed to a CSR Strategy, which is reviewed and monitored on a regular basis.
- We report on and evaluate CSR activity.
- All members of the firm are given appropriate access to CSR opportunities, which are promoted fairly and equally across the firm.
- We are proud to give our people time to participate in CSR initiatives and schemes and support them in doing so.
- Our people are managed, valued and recognised for their contribution to the firm's CSR programmes, where appropriate.
- We aim to have a sector leading CSR proposition that acts as a unique selling point for both talent and our clients.
- We are committed to continued development and improvement of our CSR strategy and offer.
- We expect our suppliers to mirror our values in respect of their ethics policies.

# NEW WAYS OF WORKING

---

The last twelve months has brought significant challenges to all sectors, and the CSR industry is no exception to this. Third sector organisations have seen unprecedented demand on their services and have had to adapt to an ever changing climate in which these services would ordinarily be delivered and accessed. Alongside working to update service delivery, charities have had to revise their fundraising strategies, with income generation being impacted by national lockdowns and restrictions.

To bridge this gap in services, fundraising and volunteering, as a firm we have worked with our charity partners to establish new ways we can support our communities in an ever changing world.





# CHARITY: OUR CHARITY COMMITTEES

## 2.6 CHALLENGE

With many national events, including the London Marathon, being cancelled this year, a UK wide campaign was kicked off - "the 2.6 challenge" - in an attempt to rescue struggling charities. Participants could get involved by doing things like a 2.6km run or cycle, 26 push-ups or making 26 cupcakes, and our AG colleagues did just that. The national campaign helped raise over £11 million and we were extremely proud to be contributors to that amount!



## RACE TO HAMBURG (LONDON VS. LEEDS)

Everyone loves a competition here at AG and what better way than to pitch the offices against each other! Our London and Leeds offices went head to head in a virtual cycle by racing to Hamburg (we also had a race to Leeds / London for the runners and walkers). Participants had 29 days to walk, run or cycle as far as they could to help their office win. It was a close call but the London team took first place!

## DONATE YOUR COMMUTE ON CITY GIVING DAY

With commutes being cancelled during lockdown, our AG London CSR committee came up with an ingenious idea of asking people to donate some of what they might otherwise have been saving by not commuting to the office each day as part of City Giving Day. There was an incredible response to this idea, raising £1,762.



## VIRTUAL GONG MEDITATION

Over the last 12 months many people have struggled with their mental wellbeing and as a business we are committed to supporting our colleagues and have a dedicated wellbeing team.

This year, our London charity committee and our Mental Health Champions quite literally put their heads together and ran a virtual meditation and fundraising event – creating time for people to pause whilst also raising money for their charity partner, Coram.

## WORKING WARDROBE

We have supported Working Wardrobe (a service providing people with access to interview clothing) for several years, and this year was no different. Not only did we set up a virtual giving platform for people to donate money so new clothes could be purchased, but we also set up Covid friendly drop off points in our Manchester office.

Working Wardrobe is a great organisation as it supports those trying hard to create a brighter future for themselves.

## KIDS OUT CHRISTMAS GIVING TREE

Christmas looked a little different this year in our offices. Gone were the usual trees in our foyers and the presents that would sit under them which had been donated for charity, Luckily, the Christmas spirit lived on with real giving trees being replaced by virtual ones!

## 5-5-5 CHALLENGE

You might have seen the 5-5-5 challenge that exploded across social media last year and, having felt inspired by the campaign, our Scottish team set their own 5-5-5 challenge with participants simply having to move (run, walk, swim, cycle or even play golf!) for 5km. They then donated £5 to their charity partner (the Rock Trust) and nominated 5 other people to take in the challenge!

## STAY UP

Partnering with The Rock Trust, the challenge to stay awake was set! In a drive to end youth homelessness, our colleagues held a virtual stay-up challenge to raise money for charity.



## OCTOPUS

A team of budding knitters and sewers got to work over their lunch times to make baby octopuses that were donated to charity for premature babies. The carefully made octopus's tentacles feel to a baby like their mother's umbilical cord, comforting them and reducing the risk of the little one pulling the medical bits and bobs they may need and potentially causing serious problems.



## A NOTE FROM OUR CHARITY PARTNERS

### LEEDS (CHILDREN'S HEART SURGERY FUND)

Here at Children's Heart Surgery Fund we are proud to call Addleshaw Goddard a valued corporate partner. The team at Leeds are a pleasure to work with and always so willing to help out the charity whenever they can. The funds raised through the partnership with Addleshaw Goddard are making a difference to children from Yorkshire with congenital heart disease, and their families.

An example of the way Addleshaw Goddard have helped is to fund home blood-testing kits for children who have had open-heart surgery and are on blood thinning drugs. These children need their blood testing in hospital on a very regular basis to monitor the risk of stroke. These additional trips to hospital mean missing school and work, as well as paying for travel and parking at the hospital. The home blood-testing kits enable children to have their blood tested in the comfort of their own home, by their parents. This keeps the family together and gives the parents confidence that they can help their child manage their heart condition. The home blood-testing kits have the potential to save and improve lives. We are grateful to Addleshaw Goddard for their continued support.



### LEEDS (CHILDREN'S HEART SURGERY FUND)

---

# £1,029.75

### LONDON (CORAM)

During this year of unprecedented disruption Coram's Education division has supported 375,638 children and worked with 2,385 schools across the UK. The vital funds raised by Addleshaw Goddard colleagues has enabled the Education Division to continue providing valuable support to children during this uncertain time.

Not a day has gone by since the nationwide lockdown back in March 2020 when we have not seen, heard or read about the profound impact it has had (and is having) on the education and emotional wellbeing of our children but thanks to Addleshaw Goddard we were able to adapt to the new environment, training educators to deliver our award winning teaching resources live online.

We're proud to be partnered with Addleshaw Goddard and are looking forward to working with everyone over the year ahead to see what we can achieve together to support children's education and wellbeing.



### LONDON (CORAM)

---

# £11,840.46

### MANCHESTER (CENTREPOINT (MANCHESTER))

*Since the beginning of the pandemic, more disadvantaged young people have faced homelessness than ever before. Your support is helping to provide long term housing stability to people who otherwise would have to endure the most unsafe and insecure living conditions. Staff have got involved with a range of fundraising initiatives, led by the brilliant committee.*



### MANCHESTER (CENTREPOINT (MANCHESTER))

---

# £4,518.40

### SCOTLAND (THE ROCK TRUST)

*The partnership with Addleshaw Goddard has been truly remarkable so far. The partnership began as the start of the Covid-19 pandemic which, I think we can all say, has been tricky for us all to navigate. However, the pandemic has not diluted the passion and commitment that the Addleshaw Goddard staff have in supporting Rock Trust. In the last 12 months, staff have donated essential food and toiletry items and participated in fundraising activities including running and swimming events. Staff have raised over an amazing amount. This support is integral to Rock Trust reaching more vulnerable young people and ending Youth Homelessness in Scotland for good.*



### SCOTLAND (THE ROCK TRUST)

---

# £4,875.00



# THE AG CHARITABLE TRUST

---

**FOR OVER 30 YEARS THE ADDLESHAW GODDARD CHARITABLE TRUST (ORIGINALLY THE THEODORE GODDARD CHARITABLE TRUST), HAS BEEN PROVIDING SUPPORT TO A WIDE RANGE OF LOCAL, NATIONAL AND INTERNATIONAL CHARITIES.**

The charity is separate from the firm but has strong links to how the business supports local communities, the foundations of which have been built over many years. The charity has supported many good causes over the last few years, including the charities chosen as our charity partners such as NSPCC, Centrepont, Street League, Changing Faces, Trafford Crisis Fund, Leeds Community Foundation, British Red Cross - Scotland, London Community Response Fund, Bookmark Reading, Access to Justice Foundation, Maggie's, Age UK, Cancer Research UK, Waverley Care and many more.

In recognition of the challenges our communities have faced, the AG Charitable Trust has also adopted some new ways of working with a new tiered system of allocating funds according to the nature of the requests and the impact of this new approach is testament to the Trustees.



**AG STAFF MATCHED FUNDING**

---

**£2,622.25**



**COVID RESPONSE**

---

**£86,000**

**Addleshaw Goddard Charitable Trust**

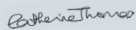
I'm delighted to advise that we have safely received the Trust's £24,000.

This gift will help children, young people and families who are coping with poverty, mental illness and domestic abuse. We are so, so grateful to the Trust and to the Addleshaw Goddard colleagues who nominated the gift.

We eagerly look forward to a time when we can invite colleagues to see our work in action. In the meantime, your generous support makes a difference to families' lives.

Thank you to everyone involved in this donation, from the board to the staff.

Yours sincerely,



Catherine Thomas  
Head of Fundraising



**I'M DELIGHTED TO ADVISE THAT WE HAVE SAFELY RECEIVED THE TRUST'S VERY GENEROUS DONATION OF £24,000. THE GIFT WILL HELP CHILDREN, YOUNG PEOPLE AND FAMILIES WHO ARE COPING WITH CHALLENGES LIKE POVERTY, MENTAL ILLNESS AND DOMESTIC ABUSE.**

Catherine Thomas, Head of Funding



**I AM WRITING TO THANK YOU FOR YOUR DONATION OF £500 TO CANDLELIGHTERS. WE ARE SO GRATEFUL FOR YOUR SUPPORT, WHICH WILL HELP US CONTINUE TO BRING LIGHT TO FAMILIES DURING THE DARKEST OF TIMES.**

Candlelighters

Candlelighters  
8 Woodhouse Square  
Leeds  
LS3 1AD  
0113 887 8333  
info@candlelighters.org.uk

to Candlelighters (your receipt number is R000022423). We are so grateful to bring light to families during these darkest of times.

Every family facing childhood cancer across Yorkshire. There is no doubt that the families we support have been required to shield and others that only one parent can be on the ward with their child. It's yet another daunting phase of the pandemic. Many are facing extremely difficult decisions on how to adapt to the frequently changing guidelines. With usual support networks still reduced and anxiety heightened, many families are also enduring financial distress due to sustained loss of earnings, mounting costs and over job security.

...another lockdown...  
...psychological and emotional...  
...whilst limiting risk and protecting...  
...families continue to face threats...  
...loss of earnings, mounting costs and...

But we remain determined to carry on supporting these families and our team have adapted to focus on offering virtual support. Between March and November we provided; financial grants to over 100 families (totalling £44,489), 140 Talking Therapy Sessions, 153 Wellbeing Sessions, 48 Peer Support Groups, Regular Check-ins to 29 families and 238 Arts & Crafts Sessions.

Families have told us:

"My little girl really enjoyed today's session. It was great to see her so at ease as and she enjoyed being able to talk to the team about her favourite things. Me and my husband are very grateful for your services it is nice to see our little girl being sociable still when it is one of the things you worry about most in lockdown"

"He loved today's craft session, thank you so much. I feel he really comes out of himself and values himself during the sessions. It does him so much good! He's had so many massive knockbacks (like all the kids you deal with) and these sessions are such a positive distraction and aid for him."

"I just wanted to reach out to you to say thank you. My son was diagnosed with Acute Lymphoblastic Leukaemia at the end of March and spent 5 weeks on L33 at LGI before being discharged home. We were lucky to receive the £600 grant from Candlelighters, which has been a great help having some additional income to assist with travel to Leeds and the additional items that my son has needed."

Without supporters such as The Addleshaw Goddard Charitable Trust, we would not be able to continue providing these vital services.

25<sup>th</sup> September 2020

On behalf of everybody at The Felix Project, I would like to thank you for your very generous donation of £1,000 made to us recently. Your donation could not have come at a more vital time and will enable us to deliver enough food for 6,100 meals for people in need across London.

With thanks to generous support from Addleshaw Goddard, we have rescued and re-distributed enough food to provide in excess of 12 million meals to hundreds of thousands of vulnerable Londoners this year. This is nearly double the food we provided in the whole of 2019!

Our food is helping people who have lost their jobs, people on low incomes, children and families who are struggling, people who are sick, key workers struggling to find food, older people who are isolated, homeless people, survivors of domestic abuse, and refugees.

Many new beneficiaries of our food did not need our help before the pandemic. Zoe Green, mother to four, said: "We'd never known food poverty until the coronavirus hit. When we got the first donation from The Felix Project, I was crying as I unpacked all the fresh food".

London is already facing its worst hunger crisis in decades – and with the latest reports suggesting an alarming 1.8 million people estimated to be at risk of food insecurity in London, the situation is predicted to worsen. The Felix Project will endeavour to meet this new demand by upscaling our operations to deliver enough food for 100 million meals a year from the end of 2023.

Thanks to the kind support of Addleshaw Goddard, our response to this crisis has refocused from a 3-month or 90 day one, to a 3-years and beyond response.

Yours sincerely,



Will Savage  
Corporate Partnerships Manager  
E: [will@thefelixproject.org](mailto:will@thefelixproject.org)  
T: 07843353984

The Felix Project, Unit 6 Kendal Court, Kendal Avenue, P  
020 3034 4350 | [www.thefelixproject.org](http://www.thefelixproject.org) | inf  
Company No: 10068253 | Charity No

“

**ON BEHALF OF EVERYBODY AT THE FELIX PROJECT, I WOULD LIKE TO THANK YOU FOR YOUR VERY GENEROUS DONATION OF £1,000 MADE TO US RECENTLY. YOUR DONATION COULD NOT HAVE COME AT A MORE VITAL TIME AND WILL ENABLE US TO DELIVER ENOUGH FOOD FOR 6,100 MEALS FOR PEOPLE IN NEED ACROSS LONDON.**

Will Savage, Corporate Partnerships Manager



As well as offering support to charities put forward by our people, the Trust also promotes a culture of charitable fundraising amongst colleagues through a programme of matched funding.

“



**I'M PROUD OF THE WAY IN WHICH THE AG CHARITABLE TRUST SUPPORTS THOSE CHARITABLE CAUSES LINKING US TO THE COMMUNITIES AROUND US AS WELL AS SUPPORTING CHARITABLE PROJECTS AND ORGANISATIONS THAT OUR PEOPLE ARE ACTIVELY INVOLVED WITH. THIS YEAR ALONE, WE HAVE PLEDGED OVER £80,000 TO THOSE CAUSES CLOSE TO OUR PEOPLE'S HEARTS DURING THE COVID 19 CRISIS.**

Louise Cliffe, Senior Trust Manager

# KUSASA

---



**WE WERE VERY EXCITED TO LAUNCH OUR PARTNERSHIP WITH THE KUSASA PROJECT IN SOUTH AFRICA LAST YEAR. THIS INTERNATIONAL CHARITY PARTNERSHIP GIVES US THE OPPORTUNITY TO WORK ALONGSIDE A GREAT ORGANISATION WHICH IS HELPING TO DELIVER A BETTER FUTURE FOR CHILDREN. ONE OF THE KEY PILLARS OF OUR CSR STRATEGY IS ACCESS TO EDUCATION, AND TO THAT END WE ARE DELIGHTED TO HAVE PARTNERED WITH THE KUSASA PROJECT.**

James Herring,  
London Office CSR Partner

The Kusasa Project was founded as a non-profit in 2006 by friends Dave Riordan and Doug Gurr in the Franschhoek Valley of the Cape Winelands of South Africa, to address the systemic deficiencies in the areas of literacy, nutrition and sport for disadvantaged children. In 2010 they decided to directly address the issue of recurring poverty at its roots by the establishment of an independent primary school serving disadvantaged children: The Kusasa Project Early Learning Centre.

The school provides places for 125 children aged four to nine with a core focus on fundamental reading-writing-maths-communication skills, and an additional emphasis on nutritional and mental health, self-confidence, personal responsibility, community and social engagement. It aims to encourage academic curiosity and achievement, sporting and life skills development for the disadvantaged local children, taking a mission-focused and committed approach.

The Kusasa Project aspires to break the cycle of poverty and provide the country with a brighter future by engaging disadvantaged children at an early age to give them a great foundation for educational and human development.

It has been almost two years since we launched our very first international charity partnership with The Kusasa Project in South Africa, and committed to helping the charity to achieve its goals in providing a great foundation for educational and human development of the children that depend on it.





## OUR IMPACT

---

# 26

Max Learners Per Class

---

# 135

Children and their families have access to a multi-disciplinary team of therapists per year

---

# 100%

Learners have access to technology in our functional computer room



# COMMUNITY: A YEAR OF GIVING BACK

We are committed to being a positive force for good in the areas in which we operate and one of the key pillars of our CSR approach is our community work. But this year was a different year; we were unable to support our communities in person so instead we had to look at other ways in which we could maintain our support including:

## CHRISTMAS PARTIES

With Christmas parties cancelled in 2020 we decided to donate all of our Christmas party funds to local charities. To identify the charities where we would have the most impact, we engaged with our local teams who helped inform those decisions.



**ON BEHALF OF US ALL AT KIDSO OUT, I WANT TO SAY THANK YOU TO ADDLESHAW GODDARD FOR THE DONATION OF £30,000. THIS IS A WONDERFUL CONTRIBUTION, AND I WOULD LIKE TO ASK YOU TO PASS ON OUR SINCERE THANKS TO ALL INVOLVED.**

Gordon Moulds CBE DL, Chief Executive

22 January 2021

On behalf of us all at KidsOut, I want to say thank you to Addleshaw Goddard for your donation of £30,000. This is a wonderful contribution, and I would like to ask you to pass on our sincere thanks to all involved. I can assure you that every penny will be used to provide boxes of brand-name groceries (Government restrictions permitted) to families entering the Christmas period.

Like many charities, KidsOut is facing unprecedented challenges with the onset of COVID 19. KidsOut has been forced to cancel or postpone all its fundraising events from March through to June 2021 resulting in a loss of over £1m.

It is through donations from companies like Addleshaw Goddard who not only attend our corporate fundraising event across the UK, but provide additional support that keeps KidsOut providing services to children who need our support now more than ever.

Since April 2020 we have provided:

- 10,197 Toy Boxes ensuring every child in refuge received one
- 16,515 food vouchers to families in refuge who have no access to a foodbank or other scheme.
- We received the largest Home Office grant and support from Direct Line, to support our food voucher initiative from start of lockdown to end of March 2021.
- 1,721 children's cinema tickets (under 18) and 1,109 adult's tickets to 86 different refuges across the UK in September.
- Free WiFi and Disney+ to refuges with no broadband
- We will be providing laptops to 1 in 4 refuge children so they can continue their education and stay connected to some of their friends

We have received the below feedback from children, mothers, and refuge workers:



**ON BEHALF OF EVERYBODY AT THE FELIX PROJECT, I WOULD LIKE TO THANK ADDLESHAW GODDARD FOR SUPPORTING THE CHARITY IN THE RUN UP TO CHRISTMAS. THE DONATION OF £10,000 GIVEN IN LIEU OF YOUR 2020 OFFICE CHRISTMAS PARTIES ALLOWED US TO REDISTRIBUTE THE EQUIVALENT OF 61,000 MEALS TO LONDON'S MOST VULNERABLE.**

Louise Bingham, Corporate Partnerships Manager



06/01/2021

On behalf of everybody at The Felix Project, I would like to thank Addleshaw Goddard for supporting the charity in the run up to Christmas. The donation of £10,000 given in lieu of your 2020 office Christmas parties allowed us to redistribute the equivalent of 61,000 meals to London's most vulnerable via our charity partners over the Christmas period.

hunger emergency in London. People who were already facing hunger are finding it becoming harder to find. There is a new COVID hungry emerging support before are now reliant on food banks and food charities.

I wanted to let you know that at the end of the final shift of 2020, The Felix Project redistributed 21.1m meals.

about how much food, to how many people that is... every meal equivalent, whether they are homeless, financially challenged, isolated and lonely, or a child whose family just cannot make ends meet as well as many others... this big number converts into people, real people, who we have worked hard to help. The numbers are incredible, but more importantly there is a statistic.

achieved a 3.1m meals redistribution – an incredible feat that means we redistributed a meal every single second throughout the month! All three of our depots

all lockdown and more Londoners facing hunger than ever before, The Felix Project is driving in 2021 to help families and children, the homeless, the elderly,

Addleshaw Goddard for the support.

Louise Bingham,  
Corporate Partnerships Manager

The Felix Project | Unit 6 Kendal Court, Kendal Avenue, Park Royal, London W3 0RU  
020 3034 1000 | www.thefelixproject.org | info@thefelixproject.org  
Company No: 10068253 | Charity No: 1168183

IN TOTAL, WE DONATED



# £121,000

AS PART OF OUR CHRISTMAS GIVING CAMPAIGN WHICH WAS DIVIDED ACROSS OUR LOCATIONS.





Thursday, 06 May 2021

On behalf of the Yorkshire Air Ambulance we would like to say a heart-felt thank you for your generous donation of £4,500. From Bridlington to Bradford, Richmond to Rotherham, your generosity is saving lives across the entire county of Yorkshire.

It costs £12,000 a day to keep both of Yorkshire's air ambulances flying. We rely on the generosity of people like yourself, to help save lives, 7 days a week, to have your support.

Your donation will help us to:

- Provide a life-saving rapid response emergency service in 15 minutes across 10 million acres
- Attend over 1,600 incidents a year, an average of 4 every day
- Transport patients to the most relevant treatment centre as quickly as time possible

We continue to operate two helicopters; one based at our Nostell Air Station and the other at RAF Topcliffe, near Thirsk. In recent years, donations such as yours have allowed us to purchase two brand new H145 Airbus helicopters, purchase our Night Vision goggles (worth £10,000 each) and our new 360 training room which offers our YAS medical crew and pilots the best training experience alongside our human-like training manikins, providing our crew with essential life-saving medical training opportunities.

To the little girl that was knocked over by a bus, to the motorist that came off his bike on a busy motorway, to the grandpa that went into cardiac arrest whilst out walking, to the 4.4 million people that might one day need our service, your donation means more than you know.

We are truly grateful for your support of our Charity and we would like to thank you again for thinking of the Yorkshire Air Ambulance. Please do let us know if there is anything we can help with in the future.

Yours Sincerely,

Vickie Bowden  
Regional Fundraiser - West  
v.bowden@yaa.org.uk  
07876899097

Registered Charity No. 1084339  
Registered Company No. 04263304  
Registered Company No. 04263314  
Registered Company No. 05414329



**ON BEHALF OF THE YORKSHIRE AIR AMBULANCE WE WOULD LIKE TO SAY A HEARTFELT THANK YOU FOR YOUR DONATION OF £4,500. FROM BRIDLINGTON TO BRADFORD, RICHMOND TO ROTHERHAM, YOUR GENEROUS DONATION WILL HELP KEEP US FLYING AND SAVING LIVES.**

Vickie Bowden, Regional Fundraiser - West



**I'M WRITING ON BEHALF OF ABERLOUR TO SAY AN ENORMOUS THANK YOU FOR YOUR GENEROUS £3,000 DONATION...YOUR SUPPORT REALLY DOES MAKE A DIFFERENCE.**

Abby Parkhouse, Regional Fundraiser - East



to say an enormous thank you for your generous £3,000

created a higher level of need from vulnerable children and Aberlour are only in the position to be able to help these people through the kindness and generosity of people like you.

to, thanks to Addleshaw Goddard, will be able to feed their children this winter, and from all of us at Aberlour, please accept our

Your support really does make a difference.

With best wishes for 2021.

Abby

Abby Parkhouse  
Regional Fundraiser - East  
T: 07730 195164  
E: abby.parkhouse@aberlour.org.uk



Registered Head Office: 36 Park Terrace, Stirling, FK8 2JR Tel: 01786 450335 Fax: 01786 473238 Email: enquiries@aberlour.org.uk  
A Scottish Guarantee Company No - SC312912 Scottish Charity No - SC007991

www.aberlour.org.uk



**OVER THE PAST 18 MONTHS OUR UK OFFICES HAVE BEEN TIRELESSLY FUNDRAISING, VOLUNTEERING, RAISING AWARENESS, AND UNDERTAKING PRO BONO WORK FOR OUR OFFICE CHARITY PARTNERS, AND WE ARE INCREDIBLY PROUD OF THE FUNDRAISING TOTALS THE COMMITTEES HAVE WORKED TO ACHIEVE. WE LOOK FORWARD TO CONTINUING OUR WORK WITH OUR PARTNERS AND FINDING INNOVATIVE WAYS TO RAISE FUNDS AND AWARENESS ON VIRTUAL PLATFORMS.**

Bruce Lightbody, Leeds Office CSR Partner

**MANCHESTER YOUTH ZONE**



Wednesday 6<sup>th</sup> January 2021

I wanted to write and say thank you on behalf of everyone at Manchester Youth Zone for the generous donation from Addleshaw Goddard, which we received as a surprise, and a very welcome one.

Talent is evenly distributed, but opportunity is not. Since our belief, that all young people should be able to access the same opportunities, we provide young people aged 6-19, (up to 25 with additional needs) with the support enabling them to choose a positive, independent lifestyle by offering them the chance to meet and someone to talk to.'

Manchester Youth Zone have strong relationships with some of the best organisations across North Manchester – your support is enabling those facing the challenges of COVID-19, to have a brighter future. As we go into Lockdown, we support young people via our 'Virtual Youth Zone' – offering daily challenges, quizzes, and activities in groups or one to one – to ensure that young people continue to have a positive future.

In normal times, we see over 1,000 visits from young people across Manchester to our centre, situated at the heart of the community. Our 'universal offer' provides young people with confidence, competence and self-reliance such as climbing, employability, arts and sports. Success comes in all shapes and sizes – reaching the top of the mountain, getting a first meal, going back to school after being excluded, getting a first job, getting a 'dumped' bike until it's fit for purpose, or singing in front of a crowd. Our goal is to inspire these individuals through quality relationships with highly skilled youth workers. Small group and one-to-one work creates in young people a sense of purpose and achievement on which they can build a more positive future for themselves and long term personal change.

Donations such as yours enable us to make a real difference in the lives of young people.

Please consider this an open invitation to yourself and your colleagues to visit us in the future and see the impact of your support. Thank you so much again.

Best wishes

Hannah Wright  
Head of Development



**I WANTED TO WRITE AND SAY THANK YOU ON BEHALF OF EVERYONE AT MANCHESTER YOUTH ZONE FOR THE INCREDIBLY GENEROUS DONATION FROM ADDLESHAW GODDARD, WHICH WE RECEIVED BEFORE CHRISTMAS. THIS WAS A FANTASTIC SURPRISE, AND A VERY WELCOME ONE.**

Hannah Wright, Head of Development

**INSPIRING A GENERATION**

With your support, we can give young people somewhere to go, something to do and someone to talk to.  
info@manchesteryouthzone.org | www.manchesteryouthzone.org | @manchesteryouthzone | 0161 209 5333  
Manchester Youth Zone, 901 Rochdale Road, Harpurhey, Manchester, M9 9AE | Registered Charity Number: 1134580

## FOOD PARCELS

From November 2020 to March 2021 our catering teams across Leeds, Manchester and London cooked up a storm in their kitchens to help feed those in food poverty. The combined effort saw the teams serve between 9,000 and 10,000 hot meals in each of the three offices.

It was a huge coordinated effort and we are very proud of the support our teams were able to give.





## VIRTUAL LEARNING: LAPTOPS

Lockdown saw the prolonged closure of many schools, colleges and other educational facilities across the UK. Unfortunately it was the disadvantaged young people in our communities that felt this the most.

Without access to education, disadvantaged pupils faced falling behind their peers and our IT department set about identifying as many laptops across the business that could be repurposed and distributed to individuals, schools, charities and other organisations, including the Refuge Council.

Since January 2021 we have donated over 400 laptops and the team is continuing to identify ways in which they can support people within our communities.



**I JUST THOUGHT THAT I SHOULD SHARE THESE HEART-WARMING WORDS FROM THE YOUNG PEOPLE WHO'VE RECEIVED SOME OF YOUR DONATED LAPTOPS. THEY ARE GRATEFUL AND I HOPE YOU AND YOUR TEAM KNOW, THAT THEY ARE A GREAT BUNCH OF KIDS FULL OF HOPES AND DREAMS THOUGH FEAR AND TRAUMA HAVE OCCUPIED THEIR HEARTS DUE TO THEIR CIRCUMSTANCES FROM THEIR HOMELANDS.**

Joe Jakes, Children's Section,  
Refuge Council

### **A girl from Somalia:**

"I really appreciate the gift [laptop] given to me and my brother. Now I study very well, it is helping me instead of using the phone. The laptop has helped me to do research, save documents, do homework, and join online classes and participate in social activities. I thank you so much."

### **A girl from Guinea:**

"Thank you for being a good helper towards young people's success and may God reward all your heart desires."

### **A boy from Ethiopia:**

"Thank you very much, I received the laptop and I was so happy. I really appreciate and it will help me with my college work. Thank you very much for this."

### **A boy from Eritrea:**

"Wow, I am happy to have a laptop. It is hard to attend classes using my phone and now I can see a big screen and can see my friends better. Tell the people that they are good people and I appreciate them."



**THANK YOU SO MUCH FOR YOUR INCREDIBLE SUPPORT OF POWER TO CONNECT THROUGH BATTERSEA POWER STATION'S CHALLENGE 100. THE 50 INCREDIBLE LAPTOPS ADDLESHAW GODDARD DONATED HAVE BEEN A HUGE HELP TO LOCAL FAMILIES. THANK YOU FOR SHIPPING THEM ALL THE WAY FROM LEEDS! THE POWER STATION AND ITS PARTNERS SMASHED THROUGH THEIR TARGET TO COLLECT 100 DONATED DEVICES WHILST SCHOOLS WERE CLOSED TO SUPPORT THE MOST VULNERABLE PUPILS DURING THE THIRD NATIONAL LOCKDOWN. BATTERSEA POWER STATION'S CHALLENGE 100 ALSO RAISED OVER £5,000. POWER TO CONNECT HAS NOW DELIVERED OVER 1,000 DEVICES TO 75 WANDSWORTH SCHOOLS SINCE APRIL 2020.**

Power to Connect - Challenge 100

## VIRTUAL LEARNING: BOOKMARK

We are now in our third year of supporting Bookmark - a children's literacy charity that delivers volunteer-led online reading support to primary school children aged 5-9 and this year we were able to grow that support to include virtual volunteering, pro bono and financial donations.



**THE PANDEMIC HAS HAD A HUGE IMPACT ON CHILDREN, PARTICULARLY THE MOST DISADVANTAGED IN OUR COMMUNITIES.**

**EVEN PRIOR TO THE PANDEMIC, 8 CHILDREN IN AN AVERAGE CLASS WOULD LEAVE PRIMARY SCHOOL UNABLE TO READ WELL AND SCHOOL CLOSURES HAVE LEFT A VAST NUMBER OF YOUNG CHILDREN EVEN FURTHER BEHIND IN THEIR BASIC LITERACY.**

**IN RESPONSE TO SCHOOL CLOSURES, BOOKMARK MOVED ITS READING PROGRAMME ONLINE AND, AS A RESULT, VOLUNTEERS SUPPORTED MORE CHILDREN THAN EVER ACROSS THE COUNTRY AND WE'VE HAD A FANTASTIC RESPONSE FROM AG WITH VOLUNTEERS FROM VARIOUS OFFICES DELIVERING 44 ONLINE READING SESSIONS TO CHILDREN THIS YEAR WITH BOOKMARK.**

Claire Bourke, Corporate Partnerships Manager,  
Bookmark Reading Charity



**Bookmark**

change a child's story



**TIME IS SO PRECIOUS AND IF I'M GOING TO GIVE HALF AN HOUR, I WANT IT TO HAVE MAXIMUM IMPACT. KNOWING THE FACTS ABOUT LITERACY IN THE UK, ESPECIALLY WITH THE ANGLE OF THE PANDEMIC AND HOW IT'S SET THINGS EVEN FURTHER BACK, IS WHAT INSPIRED ME AND MY COLLEAGUES TO PUT OUR NAMES FORWARD TO VOLUNTEER... I SAW A REAL IMPROVEMENT IN THE CONFIDENCE OF THE CHILD I WAS READING WITH. AT THE BEGINNING, HE WOULD MURMUR DIFFICULT WORDS AND MOVE ON. TOWARDS THE END, HE WAS REALLY GIVING IT A GO. EVEN IF HE DIDN'T GET IT RIGHT, I SAW HIM TRYING MORE UNFAMILIAR WORDS AND REALLY ENGAGING WITH THE CONTENT IN THE STORIES.**

Zanib Beebi, Associate, Infrastructure, Projects and Energy





## END OF YEAR GIVING

As we approached our financial year end we looked back on a year in which charities had struggled with funding, fund raising opportunities had been impacted, yet at the same time demand for help and support from charities had steadily increased. Our financial year had turned out better than expected and so we decided that we had another opportunity to give something back and help make a difference to some good causes which had seen particular pressures surface during lockdown. Our central CSR team, working closely with the finance team, managing partner and international colleagues helped identify some additional charities and good causes where we felt we could make a real impact.

IN TOTAL WE DISTRIBUTED

# £246,000



**WE ARE SO GRATEFUL FOR THIS GENEROUS DONATION FROM ADDLESHAW GODDARD, WHICH WILL GO A LONG WAY IN HELPING US BUILD TWO NEW SOCIAL BITE VILLAGES. THESE INNOVATIVE SOLUTIONS TO HOMELESSNESS PROVIDE PEOPLE WITH THE STABILITY AND THE SUPPORT THAT THEY NEED TO BUILD A BETTER LIFE. WE BRING VACANT LAND BACK INTO USE, USING PIONEERING PRE-FABRICATED HOUSING UNITS AND A CENTRAL HUB TO CREATE A COMMUNITY WITH ACCESS TO 24-HOUR SUPPORT. SINCE OPENING OUR FIRST VILLAGE IN EDINBURGH, 39 PEOPLE HAVE BEEN HELPED WITH A HOME AND SUPPORT TO BREAK THE CYCLE OF HOMELESSNESS. THESE COMMUNITIES HAVE A TRANSFORMATIVE IMPACT ON PEOPLE'S LIVES. THANK YOU FROM THE BOTTOM OF OUR HEARTS FOR HELPING MAKE THEM A REALITY IN TWO NEW CITIES.**

Social-Bite

4<sup>th</sup> May 2021

On behalf of the Hong Kong Society for the Protection of Children, we would like to express our heartfelt thanks to Addleshaw Goddard (Hong Kong) LLP for the generous donation of HK\$53,906.53. Our official receipt is enclosed for your information.

HKSPC has been committed to nurture children in their early childhood development since 1926. Being one of the most established organizations in the field, HKSPC currently operates 29 services units serving children aged 0 to 16 and their families, especially catering for the needs of working parents, single parents, low-income families, CSSA families, new arrival families and ethnic minority families. We serve around 3,000 children and their families on a daily basis.

In the future we will further develop and consolidate service expertise on child development and parent education & support, with emphasis on early identification and intervention of children at risk of developmental disabilities. Our efforts are made possible through the support of the community and corporate like Addleshaw Goddard (Hong Kong) LLP.

We sincerely thank your support to the needy children in Hong Kong and looking forward to your continuous support in future.

Yours sincerely,



Steve Lam  
Deputy Director  
Finance and General Administration

Encl.

持續為兒童創造一個健康、愉快及安全的成長環境 To lead and to excel in keeping children healthy, happy and safe

總辦事處：九龍旺角彌敦道387號地下  
Head Office: G/F, 387 Portland Street, Mong Kok, Kowloon

2398 0264  
www.hkspc.org

2787 1047  
info@hkspc.org

“

**ON BEHALF OF THE HONG KONG SOCIETY FOR THE PROTECTION OF CHILDREN (HKSPC), WE WOULD LIKE TO EXPRESS OUR HEARTFELT THANKS TO ADDLESHAW GODDARD (HONG KONG) LLP FOR THE GENEROUS DONATION OF HK\$53,906.53.**

Steve Lam, Deputy Director

Refuge's Freephone 24 Hour  
National Domestic Abuse Helpline  
Telephone: 0800 2000 247  
www.nationaldahelpline.org.uk

Head Office: Refuge, 4th Floor, International House  
1 St Katharine's Way, London E1W 1UN  
Office Telephone: 020 7395 7700

www.refuge.org.uk  
Twitter: @RefugeCharity  
Facebook.com/RefugeCharity

**Refuge**  
For women and children.  
Against domestic violence.

6<sup>th</sup> May 2021

Thank you so much for your generous donation towards Refuge's life-changing services for women and children escaping domestic abuse.

“

**THANK YOU SO MUCH FOR YOUR GENEROUS DONATION TOWARDS REFUGE'S LIFE-CHANGING SERVICES FOR WOMEN AND CHILDREN ESCAPING DOMESTIC ABUSE...WE COULDN'T HAVE DONE THIS WITHOUT SUPPORT LIKE YOURS.**

Charly Meehan - Head of Corporate Partnerships

...thank you  
has to live in fear of violence.

Yours sincerely,



Charly Meehan - Head of Corporate Partnerships

...ordinary challenges for Refuge and the women and services implemented in 2020 and at the start of 2021, have had and continue to have extremely dangerous partners.

...services, in March 2020 we moved swiftly to ensure all unprecedented step of moving the National Domestic the health of our workforce and ensure continuity of ntiality and security as we have in the office.

...ded. While the UK went into lockdown our National e demand than ever. To respond to survivors unable to e. The window in which women can call for help is y narrow when isolated with an abusive partner.

...igh. Never have Refuge's services been needed more, ill working around the clock to ensure we can provide and children who need us and may be experiencing of abuse under lockdown.

...s. Your support for Refuge and our life-saving services e vital than ever, as this year marks Refuge's 50<sup>th</sup> year mmitment to our mission: changing society so that no-one

Registered Charity No: 277424. Registered in England and Wales. A Company Limited by Guarantee. Company No: 1412275  
Registered Office: 4th Floor, International House, 1 St Katharine's Way, London E1W 1UN



# PRO BONO

---

**OUR PRO BONO WORK ALLOWS OUR PEOPLE TO UTILISE THE SKILLS AND EXPERTISE WHICH THEY HAVE TO SUPPORT THE COMMUNITIES IN WHICH WE OPERATE OUR PRO BONO ACTIVITIES WERE SIGNIFICANTLY AFFECTED BY LOCKDOWN WITH THE CLOSURE OF OUR LEGAL ADVICE CLINICS AND THE INSTANT DISAPPEARANCE OF 70% OF OUR USUAL PRO BONO WORK STREAMS MEANT THAT OUR PRO BONO STEERING GROUP HAD TO THINK ABOUT NEW WAYS OF WORKING.**

## PASSION PROJECTS

As a step to reinvigorate our pro bono programme, we asked our people to think about what work they would like to do in the pro bono space and, provided it fit within the pro bono requirements, we would explore these opportunities.

We continue to have a strong response from this change in direction and hope to be able to launch new work streams in 2021/2022 but some of our recent highlights include:

### PROVIDING PRO BONO SUPPORT IN THE WAKE OF THE MANCHESTER ARENA BOMBING

Alongside our industry peers, we are committed to giving back to our local communities and making a positive difference. Through our pro bono work, we take on causes that are close to our hearts. In 2017, we stepped in to support bereaved families following the Manchester Arena bombings.

On 22nd May 2017, 22 innocent people were murdered when a bomb was detonated at an Ariana Grande concert at the UK's Manchester Arena. Determined to help in any way we could following the tragedy, we joined the Manchester Law Society Pro Bono Panel. Ever since, our Partner Erin Shoesmith and Associate Priscilla Addo-Quaye have been closely involved, supporting three of the bereaved families as they navigate their way through the legal proceedings. In a large, complex and extremely technical case, we are helping them get the answers they deserve.



**AT ALL TIMES PRISCILLA HAS ACTED WITH COMPLETE EMPATHY AND UNDERSTANDING, SHE HAS PROVIDED SUPPORT AND ASSISTANCE WHILE GENTLY TAKING US BY THE HAND AND LEADING US THROUGH THE ABSOLUTE MINEFIELD OF LEGAL JARGON AND PROTOCOL.**

Paul Hett, father of victim Martyn Hett

For the families of those involved there were – and still are – so many unanswered questions. We have been there for three of the bereaved families as they deal with the aftermath and seek justice. It's a case that has demanded the utmost care, empathy and sensitivity. With thousands of disclosure documents provided by many core participants, examining the evidence has been a major exercise, as well as a heart-breaking and often humbling experience.



**MY PROUDEST MOMENT YET HAS BEEN THE PRO BONO SUPPORT WE HAVE PROVIDED FAMILIES OF THOSE WHO LOST LOVED ONES AT THE MANCHESTER ARENA BOMBING IN MAY 2017 AND WHO WE CONTINUE TO SUPPORT THROUGH THE CURRENT PUBLIC INQUIRY.**

Erin Shoesmith, Pro Bono Partner, Addleshaw Goddard

In the aftermath, our role was focused on supporting our clients, explaining the process and bringing clarity at a time of immense pain. From its onset as an inquest, later converted to a Public Inquiry, our involvement has broadened to encompass reviewing Inquiry disclosure and expert reports, undertaking extensive preparations to assist Counsels' questioning of witnesses, and, most importantly, advising the families throughout.

With investigations spanning the security arrangements, emergency response and radicalisation of those responsible, we have drawn on specialist expertise from across Addleshaw Goddard to navigate the evidence which underpins the Inquiry's Terms of Reference and explore how the attack could have been prevented.

We've also supported the families whilst making submissions to the Inquiry in relation to evidence and key failings. For example, our team made detailed submissions and recommendations around the role of British Transport Police, the vast majority of which were published in the Inquiry's Volume 1 Report.

Thanks to the Public Inquiry, some questions our clients had are now being answered. We are proud to be continuing the long tradition of law firms providing pro bono support and, in such a tragic case, doing our bit to help ensure lessons are learned.



“

**I WAS BORN AND RAISED IN MANCHESTER, AND I WAS DEEPLY SADDENED TO HEAR ABOUT THE TRAGEDY. I WANTED TO VOLUNTEER TO PROVIDE LEGAL SUPPORT TO THOSE AFFECTED.**

**IT'S CLEAR FROM THE EVIDENCE UNCOVERED AT THE INQUIRY THAT THERE WERE FAILINGS AND MISSED OPPORTUNITIES.**

Priscilla Addo-Quaye, Associate, Addleshaw Goddard

“

**IT IS HARD FOR ME TO CONVEY JUST HOW MUCH YOUR HARD WORK AND ATTENTION HAVE MADE THIS PROCESS I HAVE TO GO THROUGH BEARABLE, BUT YOU HAVE BEEN ABLE TO SHINE A LIGHT ON SOME VERY DARK DAYS WHICH I HAVE ENDURED.**

Paul Price, partner of victim Elaine McIver

---

**4+**

years of searching for answers

---

**920**

hours of pro bono work

---

**200K**

pages of Inquiry disclosure reviewed

---

**1**

public Inquiry



### STOPCOCKS

Andrew Kirkwood, Associate (Commercial), Leeds has been working with a team of lawyers to support Stopcocks – an organisation providing training, guidance and supporting the promotion of female plumbers. With the aim of breaking down barriers and stereotypes, Stopcocks is a pioneer in the building trade. To date, Andrew and the team have helped set Stopcocks up as a not-for-profit organisation, reviewed and updated their terms and conditions, helped on several litigation matters and generally been on hand to provide legal support to the organisation.

Helping organisations like Stopcocks is a shining example of marrying the work that we do as part of both our pro bono and diversity and inclusion works across the business – something we hope to do more of in the future.

## GROWING OUR INTERNATIONAL PORTFOLIO

We continue to work with our CSR aim of Unlocking Young Potential and this year we were able to launch several international pro bono projects including:



### PARIS TERROR ATTACKS

On 3 October 1980, the rue Copernic synagogue in Paris was bombed in a terrorist attack. The attack killed four and wounded 46 people. The bombing took place in the evening near the beginning of Shabbat, during the Jewish holiday of Sim'hat Torah. It was the first deadly attack against Jewish people in France since the end of the Second World War.

Two years later on 9 August 1982 a further terrorist attack took place in Paris in the Central European Jewish restaurant run by Jo Goldenberg in the old Jewish quarter of the Marais in Paris.

Both of these attacks are still under investigation by the French police and David Père (Partner, Commercial Disputes, Paris) continues the important work of acting on behalf of French Association for Victims of Terrorism and for individuals who were injured or lost relatives.

Although these horrible attacks happened more than 40 years ago, these cases still matter to the victims, who need to be represented in the criminal procedure, and deserve the best defence. David and his team are very proud to be able to assist these people and to fight for the justice they deserve.



## LEAP



**LEGAL ADVICE PROGRAMME (LEAP) IS A STUDENT-LED INITIATIVE AT THE UNIVERSITY OF HONG KONG THAT PAIRS STUDENT VOLUNTEERS WITH LAW FIRMS FOR THE PURPOSE OF PROVIDING PRO BONO LEGAL SERVICES. AG'S SUPPORT OF LEAP BROADENS OUR IMPACT IN THE COMMUNITY BECAUSE IT NOT ONLY OFFERS AVENUES FOR LAW STUDENTS TO DEVELOP PRACTICAL SKILLS AND MENTORSHIP, IT FACILITATES THE ADVANCEMENT OF SOCIAL JUSTICE IN HONG KONG. IN THE PAST YEAR, WE HAVE SERVED AS HONORARY LEGAL COUNSEL TO A PARTNER ORGANISATION OF THE UNITED NATIONS' SUSTAINABLE DEVELOPMENT GOALS WHOSE MISSION IS TO PROMOTE, AMONG OTHER THINGS, SUSTAINABILITY IN THE FASHION INDUSTRY. COLLABORATING WITH HIGH-CALIBRE AND LIKE-MINDED STUDENTS TO PROVIDE PRO BONO ASSISTANCE TO NON-PROFIT ORGANISATIONS HAS BEEN TRULY REWARDING.**

*Janie Wong, Partner, Hong Kong*



**I HAD THE PLEASURE OF WORKING WITH THE HONG KONG LITIGATION TEAM ON A PRO BONO PROJECT UNDER LEAP, THE LEGAL ADVICE PROGRAMME RUN BY THE UNIVERSITY OF HONG KONG. THE PROGRAMME ENCOURAGES LAW STUDENTS TO ENGAGE IN PRO BONO SERVICES PROVIDED BY LAW FIRMS. UNDER THE PROGRAMME, I HAD THE OPPORTUNITY TO CONNECT WITH LOCAL NGOS. I SUPPORTED THEIR OPERATIONS BY DRAFTING PRACTICE MANUALS USED DURING LEGAL CLINIC SESSIONS.**

**I AM GRATEFUL TO HAVE MADE A POSITIVE CONTRIBUTION TO MY COMMUNITY WITH THE HELP OF THE FIRM. APART FROM THE SOCIETAL BENEFIT, THE PRO BONO PROJECT ALSO HONED MY LEGAL RESEARCH AND DRAFTING SKILLS. I AM VERY GRATEFUL FOR THIS OPPORTUNITY AND I HOPE THE FIRM WILL CONTINUE ITS PARTICIPATION IN PRO BONO INITIATIVES.**

*Serena Ng, LEAP student volunteer, 2019*



**SINCE TAKING ON THE ROLE OF PRO BONO PARTNER IN 2020, I HAVE BEEN PARTICULARLY PROUD OF OUR COLLABORATIVE APPROACH TO PRO BONO WORK, GIVING OUR PEOPLE THE OPPORTUNITY TO SHARE THEIR EXPERTISE AND SKILLS TO SUPPORT INDIVIDUALS AND ORGANISATIONS WHO DO NOT HAVE ACCESS TO IT. WE HAVE A HIGHLY ENGAGED PRO BONO STEERING GROUP, MADE UP OF FEE EARNERS FROM ACROSS THE FIRM WHO ARE WORKING HARD TO GROW OUR PRO BONO PROPOSITION AND IMPLEMENT A NEW STRATEGIC PLAN OVER THE COMING YEAR.**

Hugh Lauritsen, Pro Bono Partner



**HUGH AND I ARE PASSIONATE ABOUT DRIVING THE FIRM'S PRO BONO AGENDA, ENSURING QUALITY PRO BONO OPPORTUNITIES. THIS YEAR WE SIGNED UP TO THE UK COLLABORATIVE PLAN FOR PRO BONO - TO CONFIRM OUR COMMITMENT AS A FIRM AND TO HOLD OURSELVES TO ACCOUNT.**

Erin Shoesmith, Pro Bono Partner



# LOOKING AHEAD

---

WHILST WE ARE PROUD OF OUR ACHIEVEMENTS OVER THE 2020/2021 FINANCIAL YEAR, ESPECIALLY GIVEN THE CHALLENGES WE HAVE FACED, WE ARE STRIVING TO ACHIEVE FURTHER POSITIVE IMPACT ACROSS OUR COMMUNITY, CHARITY AND PRO BONO WORK STREAMS.

THESE ARE OUR HIGH LEVEL PRIORITIES TO WORK TOWARDS OVER 2021/2022

1

**REENGAGE OUR COMMUNITIES**, we haven't been able to get out into our communities in the same way in 2020/2021 but we hope that 2021/2022 will see more opportunities to reconnect with our communities with a combination of in-person and virtual activities

2

**BUILD** our pro bono programme, with more people engaged across the business by looking at different opportunities to work on passion projects and with clients

3

**REVIEW CSR** programmes to drive engagement across our offices and look at ways in which we can collaborate with clients to support their CSR aims and objectives





**PROBLEMS. POSSIBILITIES.  
COMPLEXITY. CLARITY.  
OBSTACLES. OPPORTUNITIES.  
THE DIFFERENCE IS IMAGINATION.**

**[addleshawgoddard.com](https://addleshawgoddard.com)**

© Addleshaw Goddard LLP. This document is for general information only and is correct as at the publication date. It is not legal advice, and Addleshaw Goddard assumes no duty of care or liability to any party in respect of its content. Addleshaw Goddard is an international legal practice carried on by Addleshaw Goddard LLP and its affiliated undertakings - please refer to the Legal Notices section of our website for country-specific regulatory information.

For further information, including about how we process your personal data, please consult our website [www.addleshawgoddard.com](https://www.addleshawgoddard.com) or [www.aglaw.com](https://www.aglaw.com).  
ADD.DOC.058.21