

# GLOBAL EMPLOYMENT AND BUSINESS IMMIGRATION

An Elite Team

 **ADDLESHAW  
GODDARD**

MORE IMAGINATION **MORE IMPACT**





“

By delivering what clients want wherever they need it, from high value strategic advice, to the everyday, Addleshaw Goddard prides itself on a service which is high quality, focused, relevant and consistently excellent.

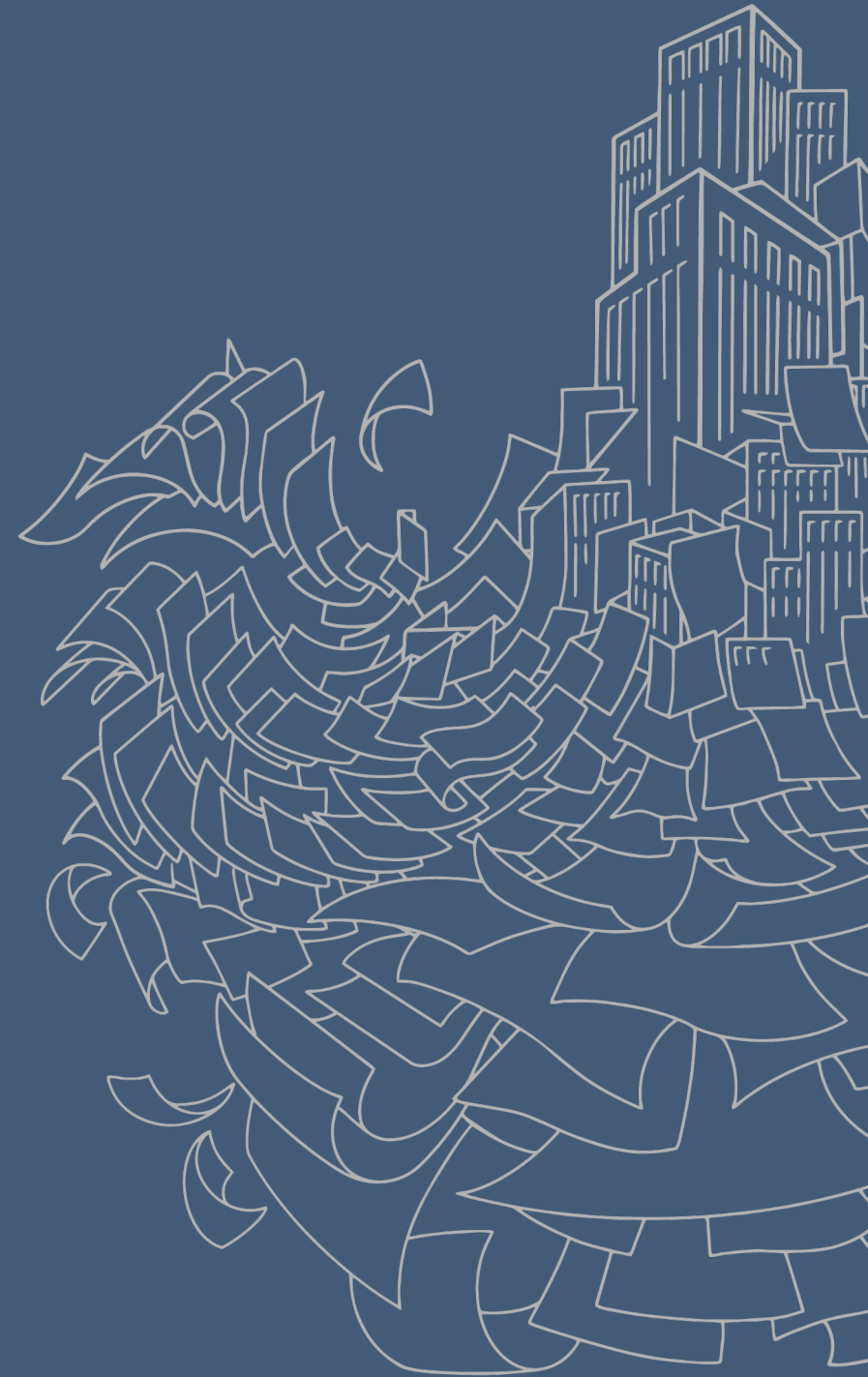
Chambers UK

# OUR TEAM

**OUR GLOBAL EMPLOYMENT AND IMMIGRATION GROUP HAS A FIRST CLASS REPUTATION. WE OFFER A COMPLETE SERVICE COVERING THE FULL RANGE OF EMPLOYMENT AND BUSINESS IMMIGRATION ISSUES.**

In the UK we offer national coverage and our reach extends globally through our international offices and global networks.

We offer clients a combination of expertise and value providing innovative solutions through the use of technology and flexible resourcing.



# OUR GLOBAL REACH

**WE OFFER A TRULY GLOBAL SERVICE THROUGH A COMBINATION OF OUR OFFICES AND GLOBAL NETWORKS.**

We have offices in Aberdeen, Dubai, Dublin, Edinburgh, Frankfurt, Glasgow, Hamburg, Leeds, London, Luxembourg, Manchester, Munich, Oman, Paris, Qatar and Singapore.

We build on this through our comprehensive global networks.





“

**AG is a firm with great people. They're very responsive and are able to provide practical solutions to complex problems.**

Chambers UK

“

**Addleshaw Goddard is more than just a firm of exceptional lawyers. It is also a leader in client investment and understanding. It is proud to act for its clients, whatever the scale of their requirements.**

Legal 500

# OUR SERVICES





**IMMIGRATION AND  
INTERNATIONAL  
MOBILITY SERVICES**

Sponsor License  
Applications and Renewal

Compliance with  
Sponsorship Duties

Right to Work / Visa  
Sponsorship Compliance Audits

EU Settlement  
Scheme

Right to Work  
Compliance

Naturalisation as a British  
Citizen / Indefinite Leave to  
Remain Application

Avoiding Race  
Discrimination

Compliance with Visitor  
Visa Rules

Immigration Compliance  
in Transactions

High potential Individual  
Route Applications

Scale-up Route  
Applications

Applications under  
the Global Business  
Mobility Routes

# OUR SECTOR EXPERTISE



DIGITAL AND MEDIA



ENERGY  
AND UTILITIES



FINANCIAL  
SERVICES



INDUSTRIAL



REAL ESTATE



HEALTH



TRANSPORT



RETAIL AND  
CONSUMER







“

**They have a range of excellent skills and a collective knowledge of financial services that is outstanding.**

Chambers UK

“

**The team have a deep understanding of both our company and the sector, so it is easy to have sector type conversations.**

Major FMGC Client

# KEY CONTACTS



## MICHAEL LEFTLEY

Partner, Head of Employment & Immigration Group, UK  
+44 (0)20 7788 5079  
+44 (0)7909 996755  
michael.leftley@  
addleshawgoddard.com



## FRANCOIS ALAMBRET

Partner, Employment, France  
+33 (0)1 84 13 49 75  
+33 (0)6 29 34 52 34  
Francois.Alambret@aglaw.com



## BEN BROWN

Partner, Employment, UAE and GCC  
+971 4 350 6438  
+971 56 425 8071  
B.Brown@aglaw.com



## MICHEAL BURNS

Partner, Employment, UK  
+44 (0)161 934 6398  
+44 (0)7801 132448  
michael.burns@  
addleshawgoddard.com



## DAVID CANTRELL

Partner, Commercial Disputes, Ireland  
+353 (0)1 202 6437  
+353 (0)86 260 0045  
D.Cantrell@aglaw.com



## MAURA CONNOLLY

Partner, Commercial Disputes, Ireland  
+353 (0)1 202 6505  
+353 (0)87 998 4162  
M.Connolly@aglaw.com



## SHAKEEL DAD

Partner, Employment, UK  
+44 (0)113 209 2637  
+44 (0)7776 570433  
shakeel.dad@  
addleshawgoddard.com



## SARAH HARROP

Partner, Employment & Immigration, UK  
+44 (0)20 7788 5057  
+44 (0)7595 777926  
sarah.harrop@  
addleshawgoddard.com



# KEY CONTACTS



## DAVID HUGHES

Partner, Employment, UK  
+44 (0)131 222 9837  
+44 (0)7740 910671  
david.hughes  
@addleshawgoddard.com



## REBECCA KITSON

Partner, Employment, UK  
+44 (0)113 209 2627  
+44 (0)7867 721151  
rebecca.kitson  
@addleshawgoddard.com



## MARTIN LUDERITZ

Partner, Employment,  
Germany  
+49 (0)40 87 4060 25  
+49 (0)151 544 13160  
M.Luederitz@aglaw.com



## GORVINDER PANNU

Partner, Employment, Oman  
and GCC  
+971 4350 6437  
+968 2495 0705  
G.Pannu@aglaw.com



## RICHARD YEOMANS

Partner, Employment, UK  
+44 (0)20 7788 5351  
+44 (0)7747 800591  
richard.yeomans  
@addleshawgoddard.com



## ANDREW MOORE

Partner, Employment, Manchester  
+44 (0)161 934 6412  
+44 (0)7920 700877  
andrew.moore@  
addleshawgoddard.com



## DAVID HENEGHAN

Partner, Commercial Disputes,  
Ireland  
+353 (00)1 202 6452  
+353 (0)8604 12881  
D.Heneghan@aglaw.com



**MORE IMAGINATION MORE IMPACT**

**[addleshawgoddard.com](https://addleshawgoddard.com)**

© Addleshaw Goddard LLP. This document is for general information only and is correct as at the publication date. It is not legal advice, and Addleshaw Goddard assumes no duty of care or liability to any party in respect of its content. Addleshaw Goddard is an international legal practice carried on by Addleshaw Goddard LLP and its affiliated undertakings – please refer to the Legal Notices section of our website for country-specific regulatory information.

For further information, including about how we process your personal data, please consult our website [www.addleshawgoddard.com](https://www.addleshawgoddard.com) or [www.aglaw.com](https://www.aglaw.com). ADD.DOC.250.23.IND8-20