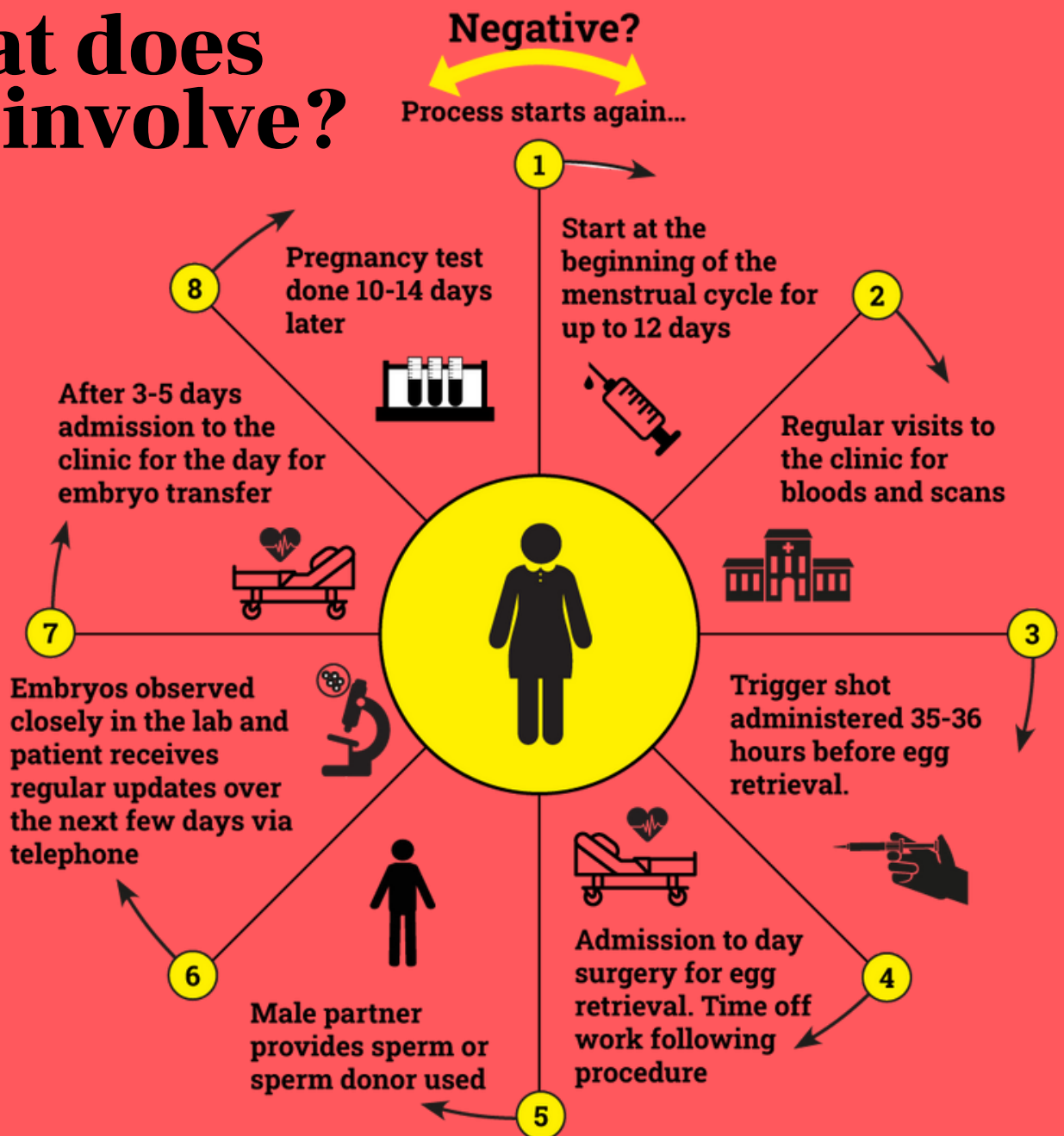


What does IVF involve?



Important points to note:

- The start date of an IVF cycle often depends on when the person's period begins, it can make planning difficult.
- Every IVF cycle is different. It is dependent on how the body responds to medications.
- Visits to the fertility clinic for internal scans and blood tests can be as often as daily or every other day, dependant on how the body is responding. Flexibility is key during this time.
- Egg collection date is difficult to determine until nearer the end of the approx. 12 days of stimulation medication. As it involves sedation or general anaesthetic at least a full day-off work will be required.
- Embryo transfer date is also difficult to plan for as it is dependant on how the embryos develop and whether the body has any side effects from egg collection (such as OHSS).
- IVF cycles may be cancelled midway through for a variety of reasons, this can cause significant emotional distress.
- Each stage of the IVF cycle comes with emotional stress. Empathy and emotional support is important.