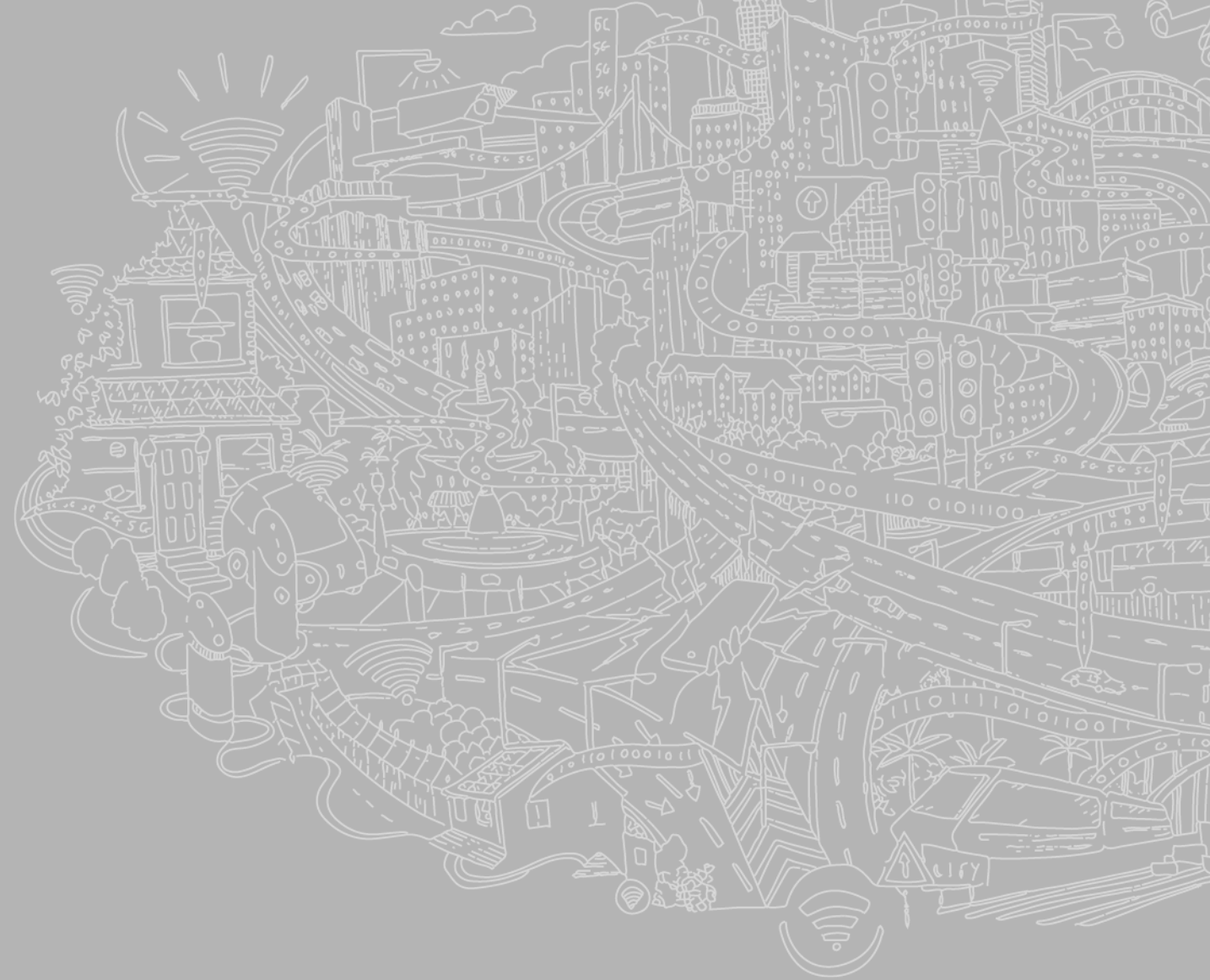


# SUIT UP

---

Getting Britain back to work

Part A: Wednesday 6 May 2020



# WHAT ARE WE COVERING TODAY?

- Returning to work: Employment aspects
- Managing the Covid-19 risk in the workplace:
  - Health & Safety
  - Data Protection
- How are other jurisdictions opening up their economies?
  - Germany
  - South Korea



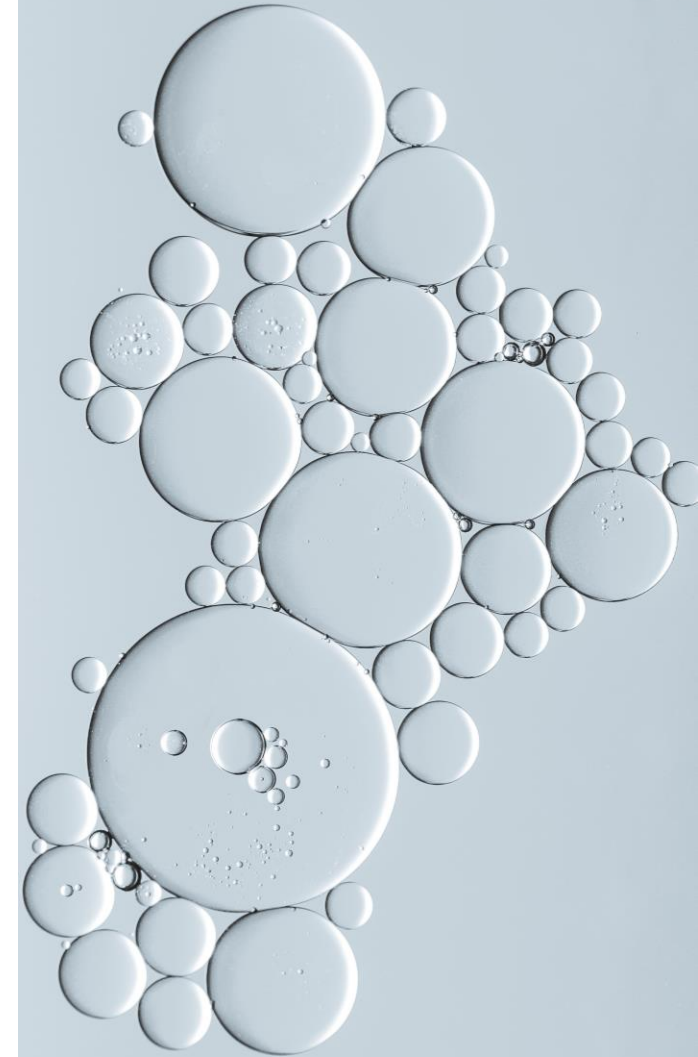
# RETURNING TO WORK: EMPLOYMENT ASPECTS

- Bringing employees off furlough
- End of furlough scheme issues
- Varying employment terms
- Vulnerable employees
- Requiring employees to come to work
- Whistleblowing
- Communication strategy
- Longer term home working



# MANAGING THE COVID-19 RISK

## PART 1: HEALTH & SAFETY – HOW DO WE MANAGE A SAFE RETURN TO WORK?



# MANAGING THE COVID-19 RISK

## PART 2: DATA PROTECTION CONSIDERATIONS: DO'S AND DON'T

Transparency

Covid-19 testing

NHSX Contact tracing  
app

Workplace  
temperature testing

# HOW ARE OTHER JURISDICTIONS HANDLING OPENING UP THEIR ECONOMIES?

## GERMANY

- Step by step approach while monitoring infection rates
- Specific risk assessment at work places
- Multiple infection prevention measures, including mouth and nose covers (if required)

## SOUTH KOREA

- Limited lockdown
- Robust contact tracing
- Social distancing measures

# SUIT UP



Please send any follow up questions to  
**[Laura.Klair@addleshawgoddard.com](mailto:Laura.Klair@addleshawgoddard.com)**

---

Getting Britain back to work

To register interest for Part B please email:

**[Emma.Whitcomb@addleshawgoddard.com](mailto:Emma.Whitcomb@addleshawgoddard.com)**